

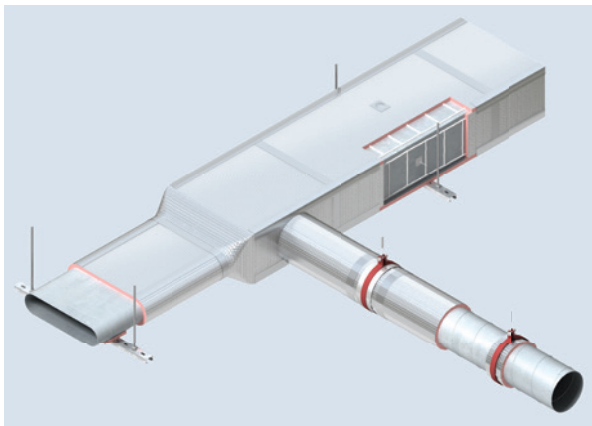


# Kingspan **Kooltherm**® FM Duct Insulation

## PREMIER & PREMIER PLUS

### Introduction

Introduced by Kingspan, to provide added value and unrivalled customer service, the Premier and Premier Plus service is designed for the needs of all projects.



Kingspan has always focused on providing specifiers, mechanical engineers and contractors with highest levels of technical support, allowing them to get maximum benefit from the premium performance of its HVAC and Building Services insulation products and systems.

Kingspan have taken this one step further with the introduction of the new Premier and Premier Plus Services, delivering clear advice and guidance at every stage in a project, from the initial specification, to site visits and certification.

Designed for the needs of all projects, the Premier and Premier Plus Service offers guaranteed manufacturing excellence, first class customer service and unrivalled expertise both offsite and on-site.

### Kingspan **Kooltherm**® FM Duct Insulation System

Kingspan **Kooltherm**® FM Duct Insulation is a premium performance thermal insulation designed for use on rectangular, circular and flat oval ductwork in HVAC / building services applications. It can be used to insulate ductwork, plenums and associated equipment, installed both indoors and outdoors, operating within the temperature range of  $-20^{\circ}\text{C}$  to  $+80^{\circ}\text{C}$ .

Kingspan **Kooltherm**® FM Duct Insulation is suitable for both new build and refurbishment projects in the residential, commercial, institutional, light industrial and leisure sectors.

Moreover, it is especially suitable for high specification projects where non-fibrous insulants may be preferred, for example: in the food, beverage and pharmaceutical industries; communication / server rooms in data centres; high relative humidity environments such as swimming pools; and clean air and hygiene controlled environments such as sterile areas of hospitals or laboratories.

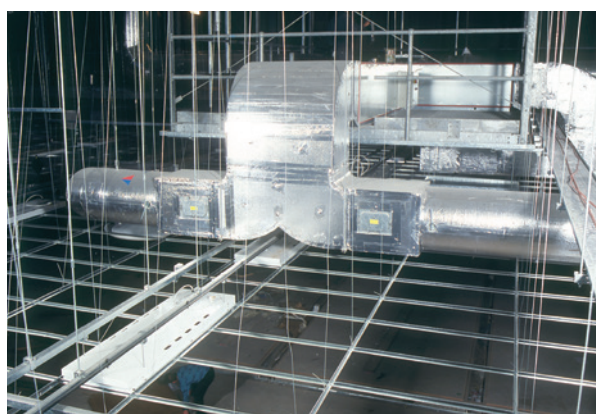
Kingspan **Kooltherm**® FM Duct Insulation has been developed to provide premium performance with regards to insulation efficiency, fire resistance, smoke emissions, compressive strength and cost.

### Kingspan **Kooltherm**® FM Insulated Duct Support Inserts

Kingspan **Kooltherm**® FM Insulated Duct Support Inserts can be fabricated on site from Kingspan **Kooltherm**® FM Duct Insulation. They can withstand the loads imposed by HVAC / building services ductwork at locations where ductwork supports and hangers are installed.

Kingspan **Kooltherm**® FM Duct Insulation can be fabricated on site to create two different types of Insulated Duct Support Inserts:

- Kingspan **Kooltherm**® FM Flat Insulated Duct Support Inserts; and
- Kingspan **Kooltherm**® FM Circular Insulated Duct Support Inserts.

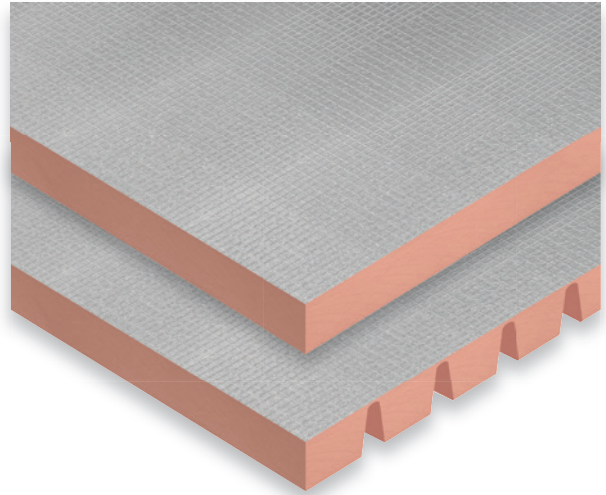


## Premier

Products included:

*Kingspan Kooltherm*<sup>®</sup> FM Duct Insulation

- Consultation service
- 'K-FM' – Pre-Tender Koolspec check service
- Thermal calculations, Part L and TIMSA
- Response within 48 hours on ALL issues\*
- Performance specifications (future proof)
- 2 x site visit inspections\*



## Premier Plus

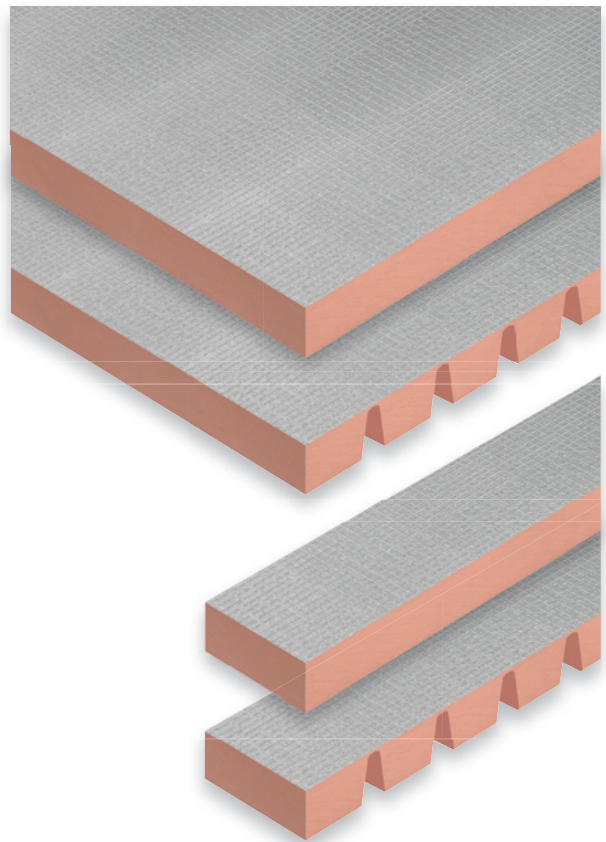
Products included:

*Kingspan Kooltherm*<sup>®</sup> FM Duct Insulation

*Kingspan Kooltherm*<sup>®</sup> Insulated Duct Support Inserts

- Consultation service
- Performance specification (future proof)
- Site visits by Kingspan Pipeline Technical Representatives
- 4 x site inspections\*
- Thermal calculations, Part L and TIMSA
- Pre-design assessment of details
- Response within 48 hours to ALL issues\*
- 'K-FM' – Pre-tender Koolspec check service
- Toolbox Talk
- Project specific warranty

*\*if required*



### **Kingspan Insulation Ltd**

Pembridge, Leominster, Herefordshire HR6 9LA, UK  
Castleblayney, County Monaghan, Ireland

UK

Tel: +44 (0) 1544 388 601 Fax: +44 (0) 1544 388 888 email: [info@kingspaninsulation.co.uk](mailto:info@kingspaninsulation.co.uk)

Ireland

Tel: +353 (0) 42 979 5000 Fax: +353 (0) 42 975 4299 email: [info@kingspaninsulation.ie](mailto:info@kingspaninsulation.ie)

Technical Advice

Tel: +44 (0) 1544 387 382 Fax: +44 (0) 1544 387 482 email: [hvactechnical@kingspaninsulation.co.uk](mailto:hvactechnical@kingspaninsulation.co.uk)

[www.kingspaninsulation.co.uk](http://www.kingspaninsulation.co.uk)  
[www.kingspaninsulation.ie](http://www.kingspaninsulation.ie)